



Volumetric Report: Coober Pedy

Cement Supply Pty

Report created on January 14, 2020

Captured: January, 9, 2020

Summary

Date flown

09/01/2020

Pilot Used

Larry Mitchell

Drone Used

DJI Mavic 2 Pro

Map Area

22.3242 Acres

Map Resolution

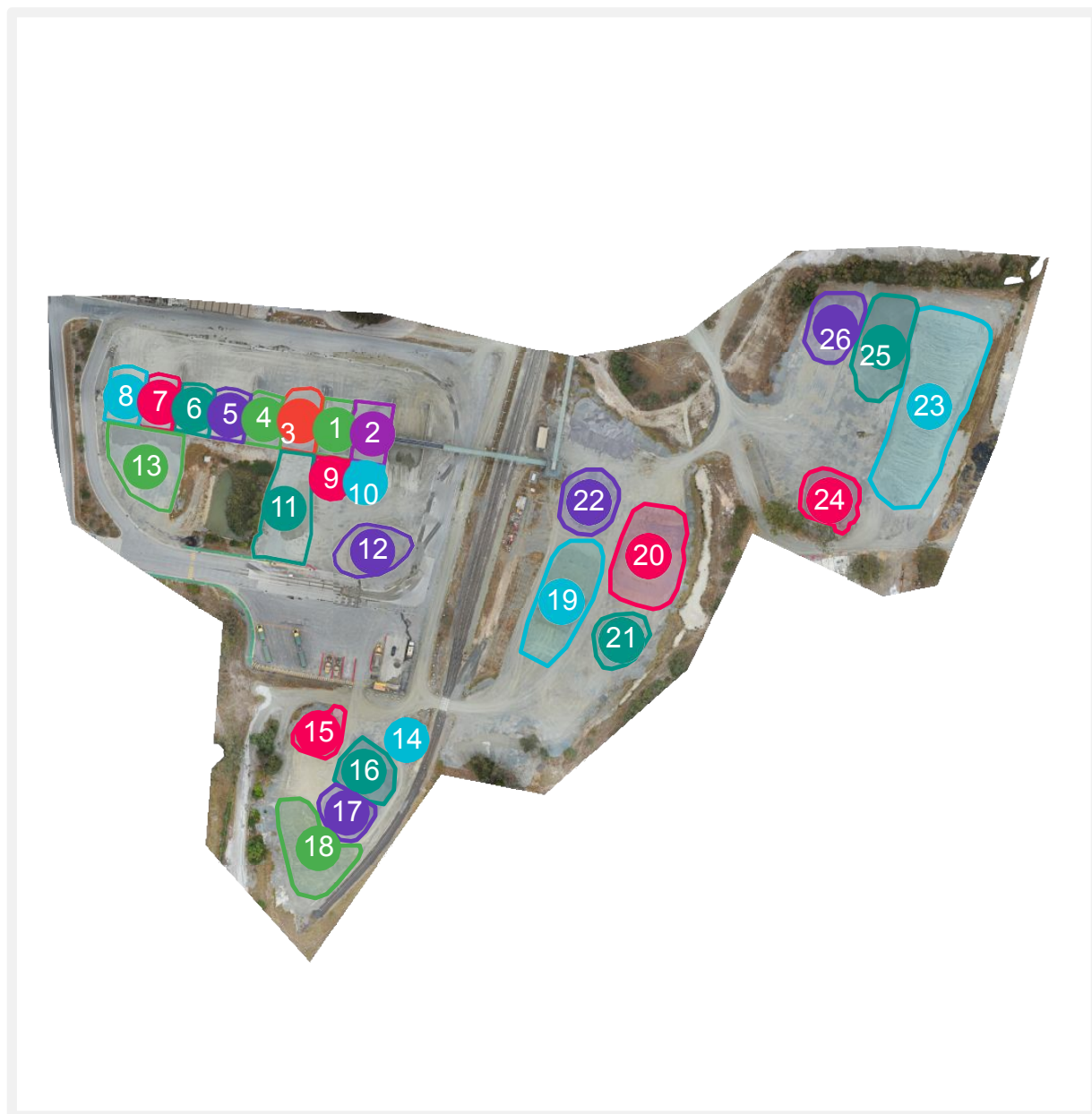
1.54 cm/pixel

Volumetric Report: Coober Pedy

Cement Supply Pty

Report created on January 14, 2020

Captured: January, 9, 2020





Stockpile Report

Pile No.	Area	Volume	Cut	Fill
1	473m ²	1898.6 m ³	1898.7 m ³	-0.1 m ³
2	508 m ²	2184.7 m ³	2184.7 m ³	0m ³
3	545 m ²	2454.6 m ³	2454.6 m ³	0m ³
4	403 m ²	1299.9 m ³	1303.1 m ³	-3.2 m ³
5	427 m ²	1557.3 m ³	1557.6 m ³	-0.3 m ³
6	404 m ²	1814.7 m ³	1814.7 m ³	-0.1 m ³
7	432 m ²	1115.9 m ³	1120.7 m ³	-4.7 m ³
8	477 m ²	1553.5 m ³	1555.6 m ³	-2.1 m ³
9	297 m ²	278.5 m ³	279.5 m ³	-0.9 m ³
10	275 m ²	536.4 m ³	536.8 m ³	-0.3 m ³
11	0.119 ha	4725.7 m ³	4725.7 m ³	0m ³
12	713 m ²	1368.8 m ³	1370.4 m ³	-1.6 m ³
13	0.114 ha	1873.1 m ³	1873.2 m ³	0m ³
14	246 m ²	330.1 m ³	330.1 m ³	0m ³
15	453 m ²	650.5 m ³	654.5 m ³	-4 m ³



Stockpile Report

Pile No.	Area	Volume	Cut	Fill
16	653 m2	975.5 m3	975.5 m3	0m3
17	511 m2	877.1 m3	877.4 m3	-0.3 m3
18	0.115 ha	2972.2 m3	2972.2 m3	0m3
19	0.144 ha	2963.4 m3	2963.4 m3	0m3
20	0.15 ha	4173.2 m3	4173.2 m3	0m3
21	573 m2	910.8 m3	910.8 m3	0m3
22	731 m2	790.8 m3	790.8 m3	0m3
23	0.319 ha	9458.9 m3	9461.5 m3	-2.6 m3
24	676 m2	1333.8 m3	1338.7 m3	-4.8 m3
25	0.119 ha	3060.5 m3	3060.5 m3	0 m3
26	768 m2	228.9 m3	238.1 m3	-9.2 m3

Volumetric Report: Coober Pedy

Cement Supply Pty

Report created on January 14, 2020

Captured: January, 9, 2020

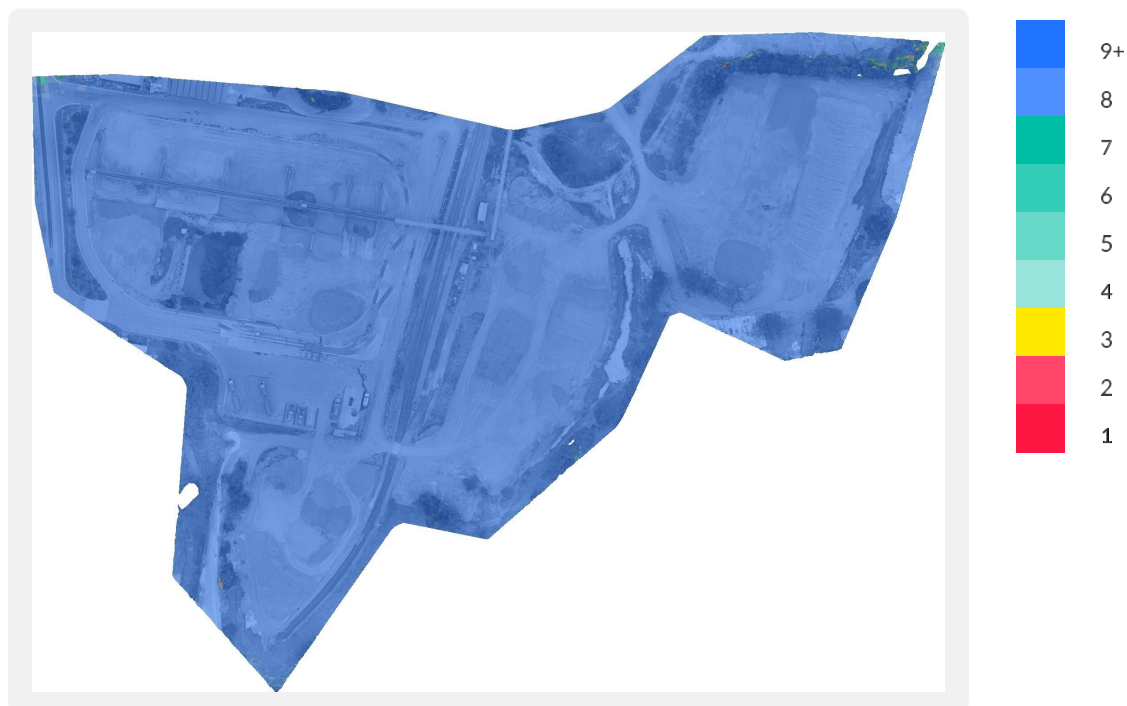
Processing Quality

The image density and stitching coverage indicate how likely an image set is to produce a high quality map. Lower numbers may indicate distortion or missing areas within the map.

Image Stitching 99.73 % - Excellent **Avg. Images per Pixel** 23.671 - Excellent

Number of Overlapping Images Per Pixel

Blue areas of the map with high numbers of overlapping images (8+ overlapping images per pixel) indicate high quality. Red and yellow areas with fewer overlapping images may appear distorted.





Volumetric Report: Coober Pedy

Cement Supply Pty

Report created on January 14, 2020

Captured: January, 9, 2020

Camera & Flight Info

Improving the quality of the data captured will improve the quality of the map generated.

Camera Model	L1D-20c	Image Resolution	18 MP
Avg. Flight Altitude	60 Meters	Number of Images	762
Frontlap Settings	75%	Sidelap Settings	65%

Accuracy

Relative Accuracy

Measurements of distance, area and volume within the map should be accurate to within 1-3 times the ground sampling distance. Map measurements are typically within 1-3% of ground-based measurements.

Ground Sampling Distance	1.5 cm/pixel		
Approx Horizontal Relative Accuracy Range	122.86 cm		
Approx Vertical Relative Accuracy Range	72.96 cm		
Optimized Camera Location Error	X 86.52 cm	Y 87.23 cm	Z 72.96 cm
Optimized Camera Location XYZ RMSE	82.5 cm/pixel		



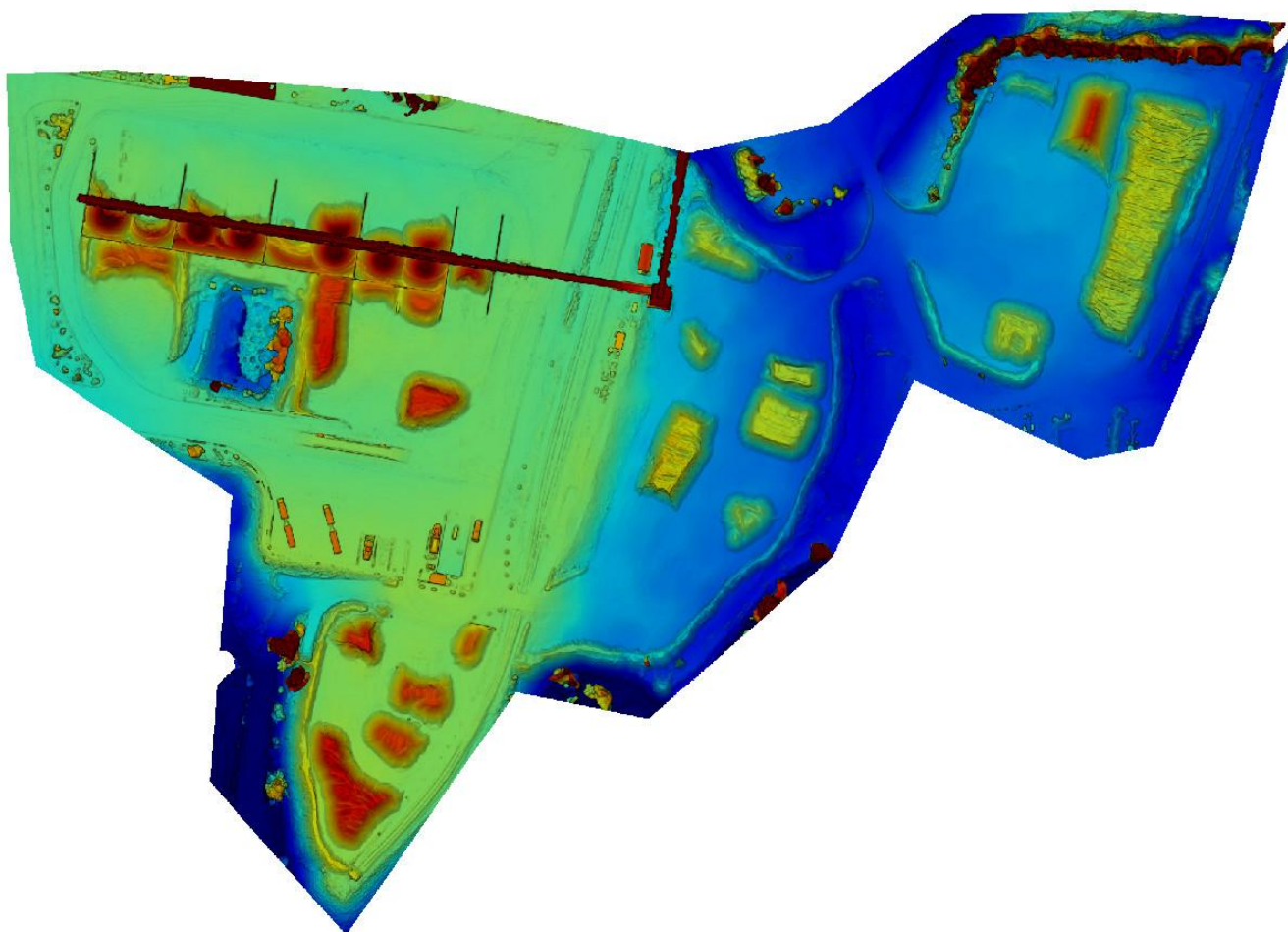
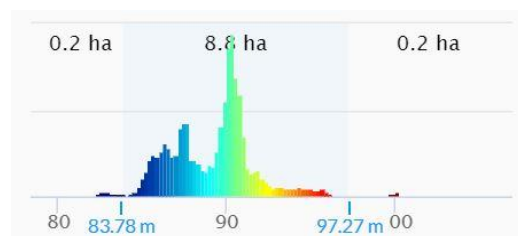
Volumetric Report: Coober Pedy

Cement Supply Pty

Report created on January 14, 2020

Captured: January, 9, 2020

Elevation Resolution: 5.55 cm/px



BIRDI Australia Pty Ltd ABN: 646 140 169 29 ("BIRDI") has taken the utmost care to ensure the accuracy of this report, however, this is not a certified survey-grade report and the level of accuracy can be affected by amongst other things, equipment (drone, camera, lense), the altitude a drone is flown, the number of photos captured, atmospheric conditions, accuracy of the third-party software analytical tools relied on in processing the report. While BIRDI and its pilots exercise the utmost care in the production of this report we will not accept any liability or responsibility for any loss incurred in any way whatsoever, by any person who may seek to rely on the information contained within. The report is provided "as is" without any guarantee, representation, condition or warranty of any kind, either express, implied, or statutory. BIRDI assumes no liability with respect to any reliance you place on the report. If you rely on the report in any way, you assume the entire risk as to the truth, accuracy, currency, or completeness of the information contained in the report.